

## **Tonmind PA System**

# **User Manual**



**Xiamen Tonmind Technologies Co., Ltd.**

# Contents

**Overview .....3**

About Tonmind PA System.....3

Main functions.....3

IP Audio Endpoints.....3

**System Option Setting.....3**

**Connect PA System Lite Dispatch Console .....4**

Create SIP Accounts.....4

Setup IP Audio Devices.....6

Setup IP Phone and Soft Phone.....8

**Setup Paging Zones.....8**

**Zones Control.....9**

Voice Source Option.....9

SIP Function.....10

Time &Schedule Set.....10

SIP Trunk Set.....11

RTP Set.....11

## Overview

### About Tonmind PA System

Tonmind PA System Lite is one of Tonmind software solution, it has IP public address system, SIP voice, RTP multicasting modules integrated, it provides an all-in-one unified IP audio solution. The IP Audio Center provides centralized IP audio endpoints management, public address, background music, intercom, emergency broadcasting, audio conferencing, IP phone call and more features. It is suitable for public safety, secure community, industry, transportation, school, health, Production Studios, Commercial & industrial Buildings and more application scenarios.

#### The main functions

The main functions of Tonmind PA System Lite is as below, Tonmind is keeping to update system as customer requirement and adopt new technology.

Divide regions into zones per needs

Support SIP extension broadcast in different zones and each endpoint

The internal extension can make SIP calls.

Initiate calls using SIP phones.

Support LAN RTP multicast broadcast

#### **IP Audio Endpoints**

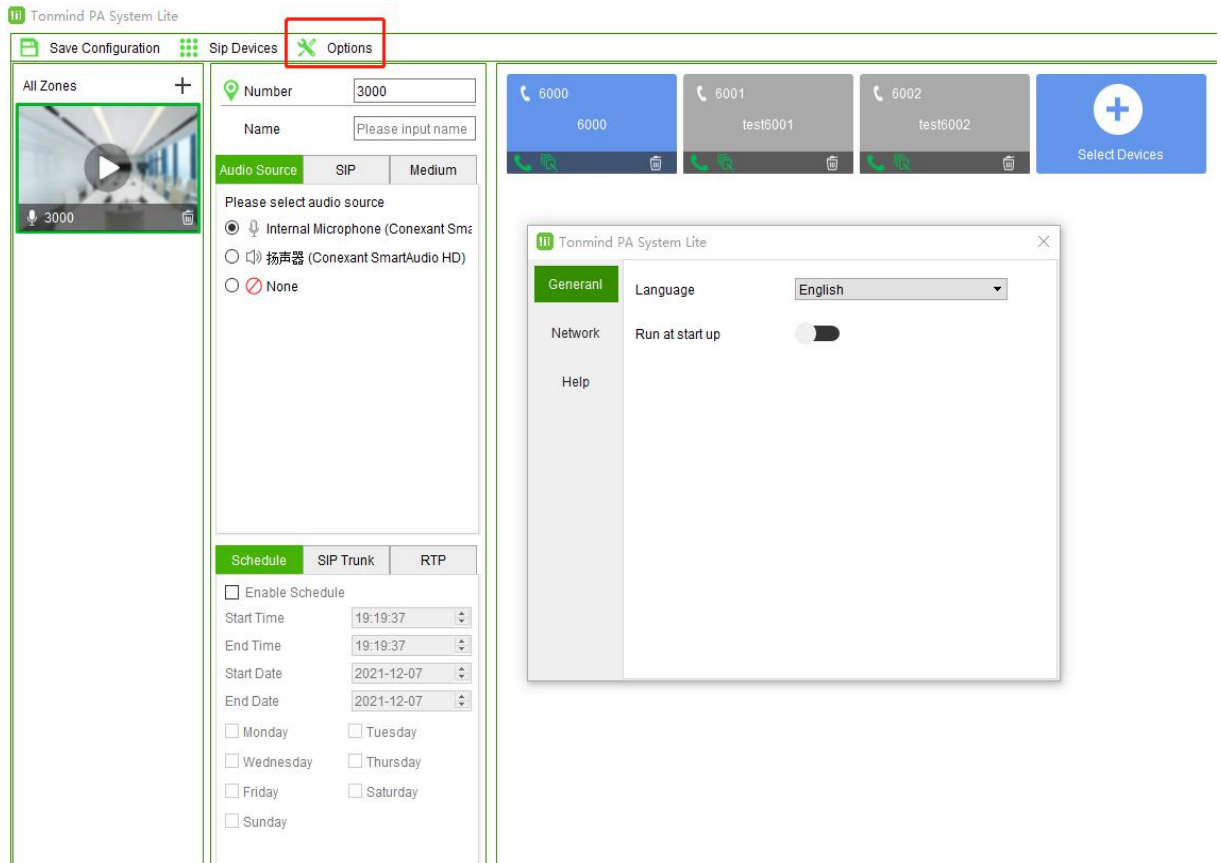
The following IP audio endpoints can be integrated into Tonmind PA System Lite:

1. Tonmind series IP SIP speakers and others
2. IP phones and soft phones

## System Options Setting

After click to start the system, then go into the page as below , click the option for setting.

- General Language and run at start up
- Network Check the IP address and SIP port
- Help Check system version and contact information



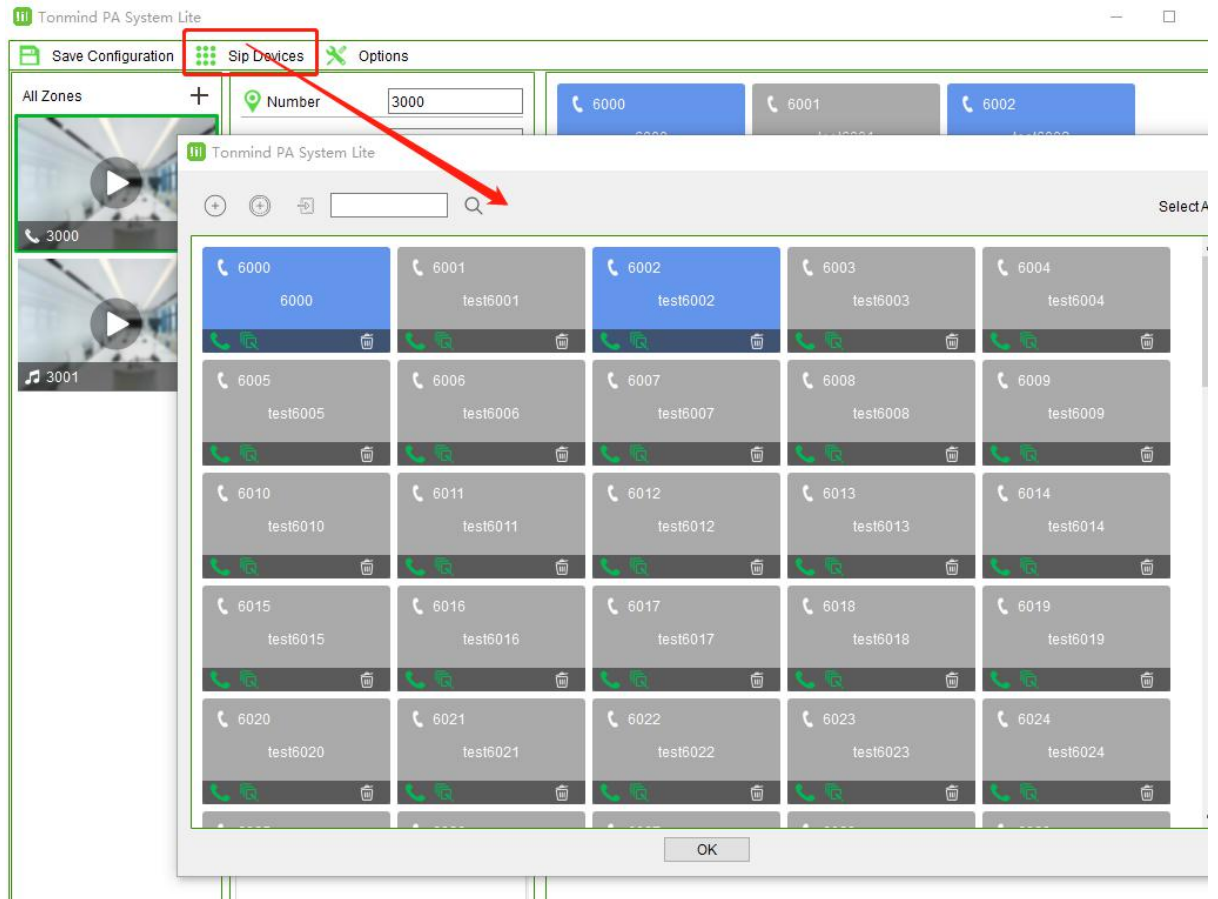
## Connect PA System Lite Dispatch Console


For using Tonmind PA System Lite to control and the device like speakers and IP phone, the following settings need to be done.

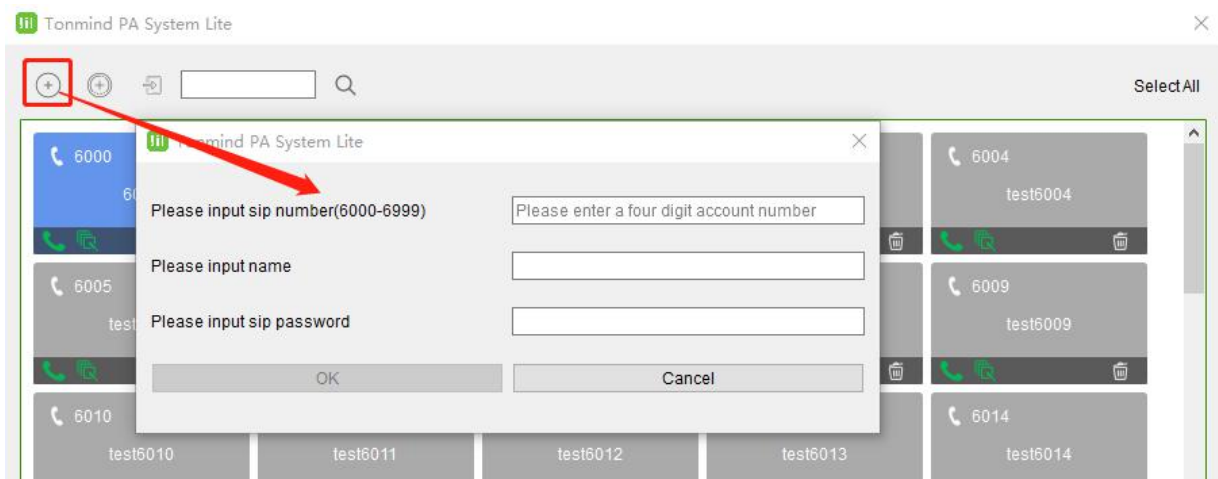
### Create SIP Accounts

All IP audio endpoints to be connected to Tonmind PA System Lite support SIP protocol, and each of them needs to be configured with a SIP account.

Please click Sip device -> go to setting screen, here on this page you can create one SIP account at a time or you can bulk create SIP accounts.



To create a single SIP account, please click on the  button., then Click OK to save the specification.

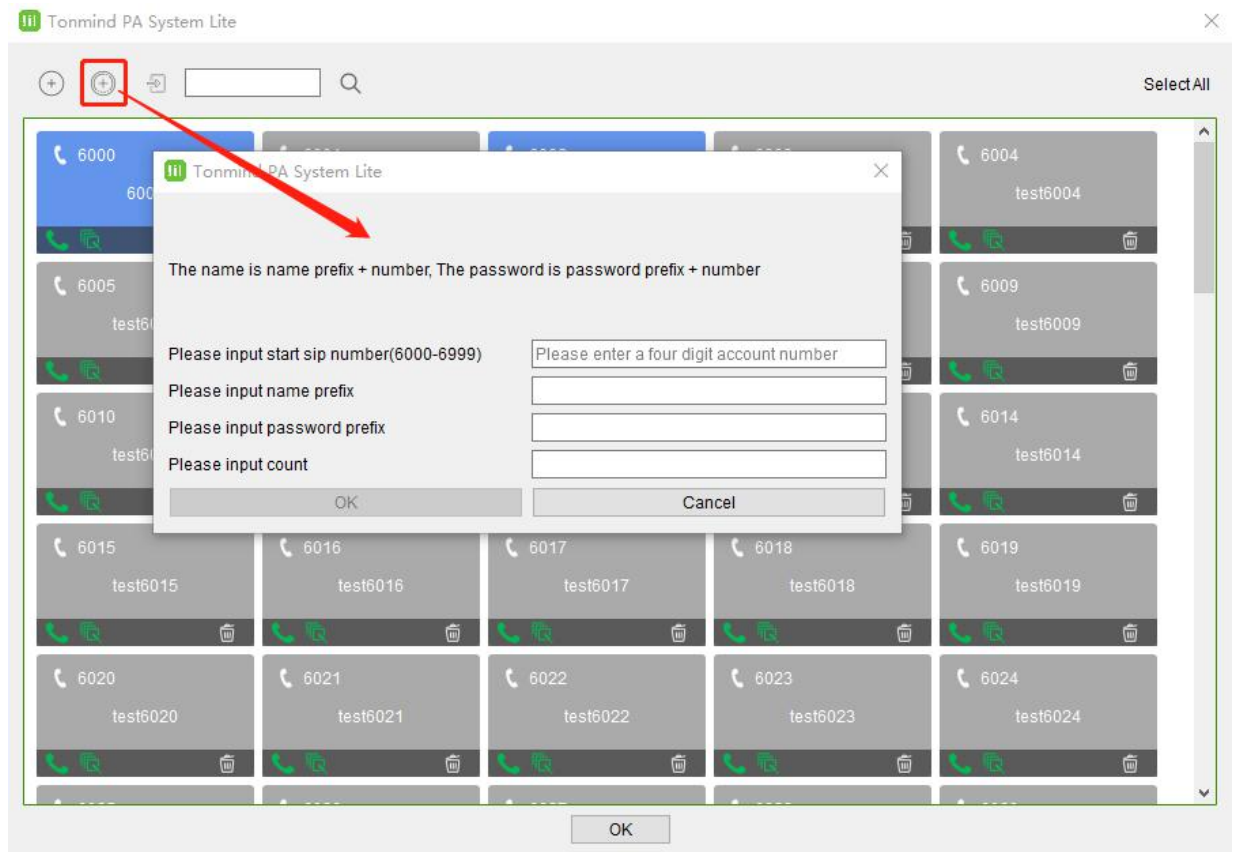


- SIP Number: The SIP account number to be used by an IP audio device, for SIP register and calling.
- Name: Create a name for the device as need.

- Password: The password to be used for SIP register.

To Create bulk SIP numbers, please click on  button, button., then Click OK to save the speciaficaton.

- 

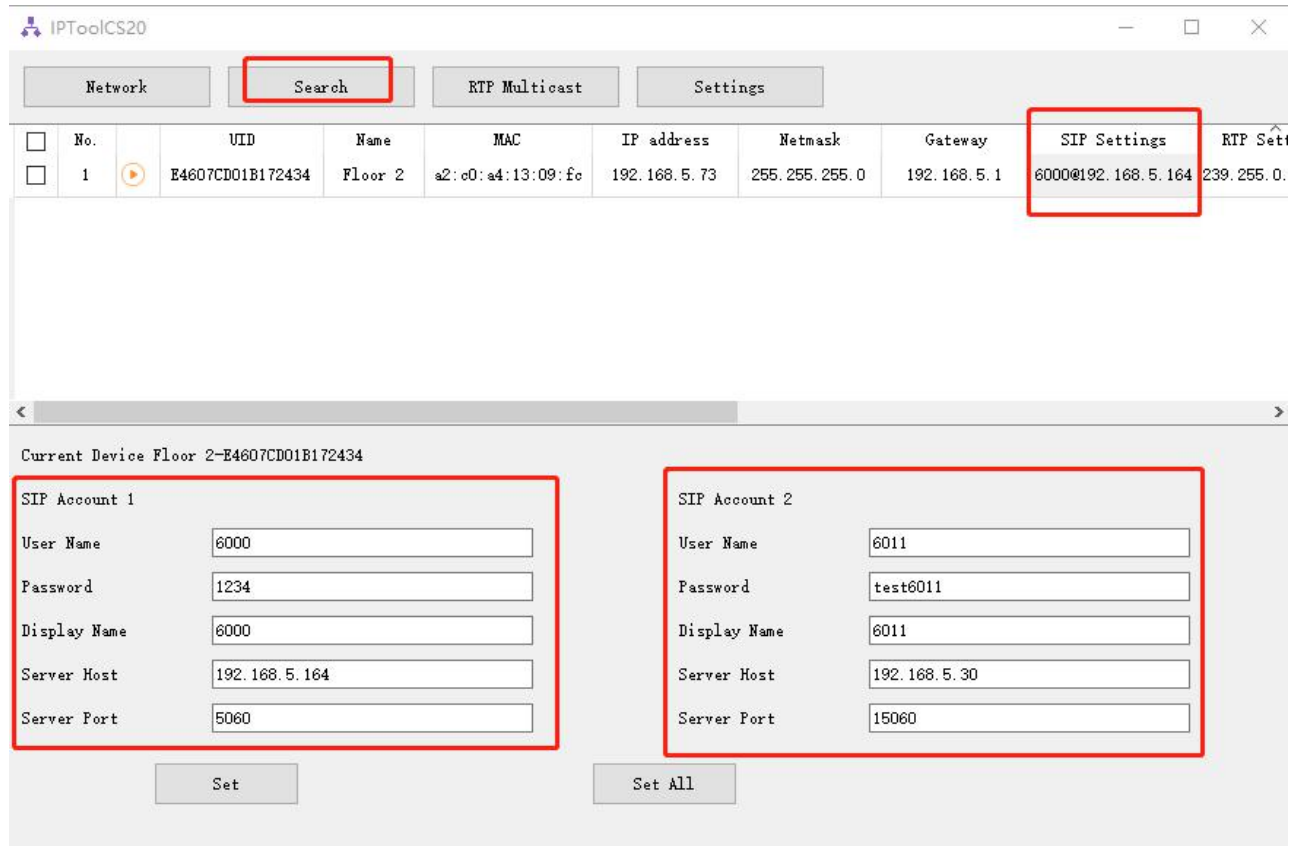


- Start SIP Number: The Start SIP account number to be used by an IP audio device, for SIP register and calling.
- Name: Creat a name for the device as need.
- Password: The password to be used for SIP register.
- Count: How many device SIP number you want to creat, for example if the start sip number is 6000 and the count is 5, then here will creat five sip number to be 6000, 6001, 6002, 6003 and 6004.

### Setup IP Audio Devices

There are 2 steps to register an IP Audio device to the Tonmind PA System Lite. Here we take SIP-S01 Network Speaker as an example.

First use our IP Tool to set up the SIP setting for speaker SIP-S01, by using our IP tool to search the device and then click sip setting. There each device could set two SIP number.

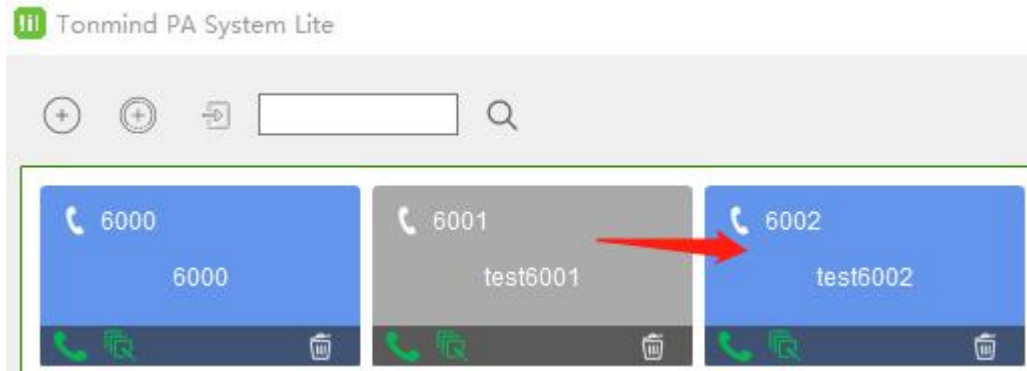


- User Name: Sip number register and calling.
- Password: The password to be used for SIP register.
- Name: Creat a name for the device as need.

Server Host: Server IP

Server Port: Default to be 5060.

When each IP Audio device sends register requests to the Tonmind PA System Lite, the device number, device type, device model and MAC address will be sent to Tonmind PA System Lite as well. Once registered, this device will be found on the Tonmind PA System Lite and also web interface, after success register, the corresponding SIP account color will change to be blue from gray.




### Addition: Setup IP Phone and Soft Phone

It is the same as above setting of IP Audio Devices, go into the web interface of the IP phone or soft phone, after finish the required information of SIP number, name, password, server IP and port, then it will send the message to Tonmind PA System Lite and if succeed, the correspondig server SIP account will change to blue, and it will be able for calling.

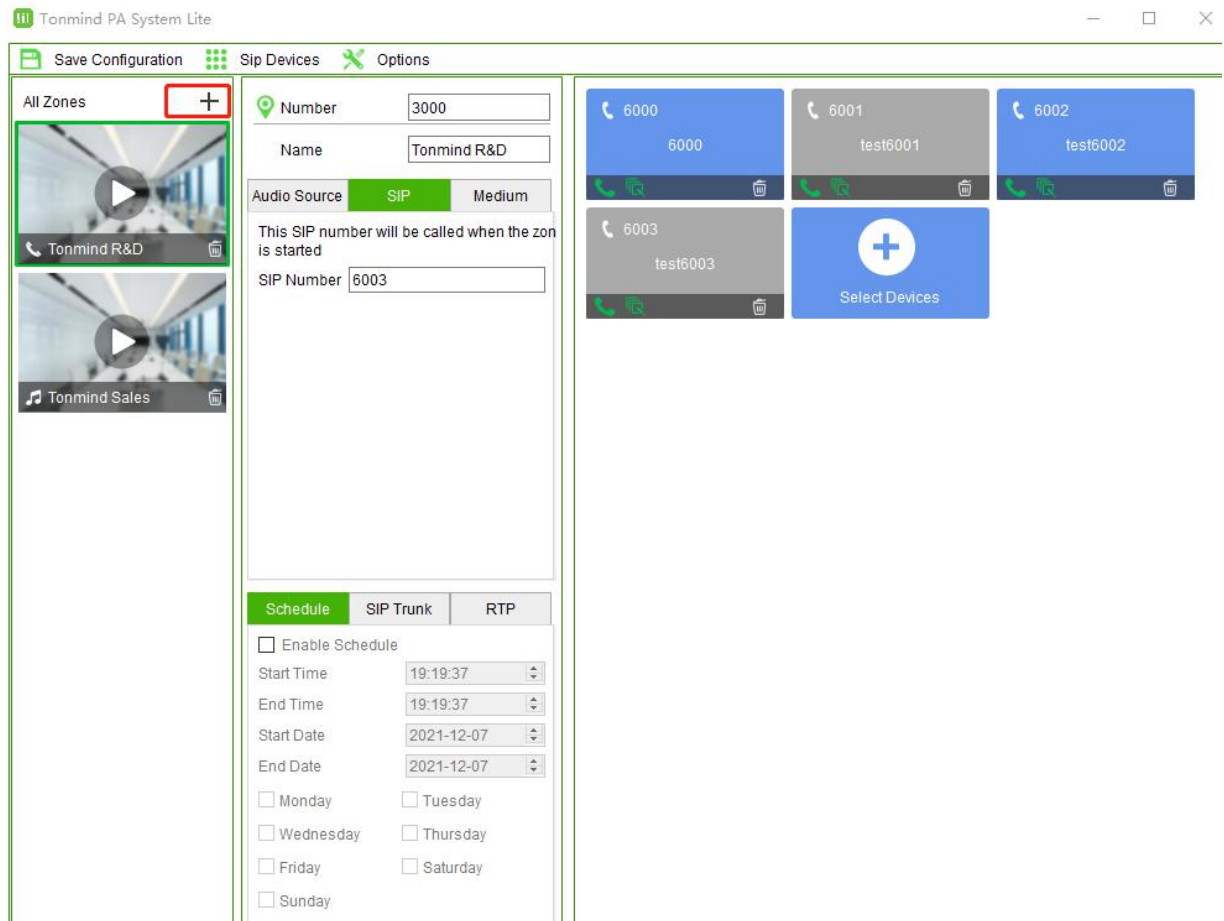
## Setup Paging Zones

After registered all IP audio endpoints to the Tonmind PA System Lite, next step you have to group them. A group/zone can be the IP audio devices of a specific area or a same type of IP audio devices.

By grouping the IP audio devices, you can achieve group (zone) -based SIP paging, music, notification, etc.

To create paging groups, at the place of all zones , click the  to add zones.





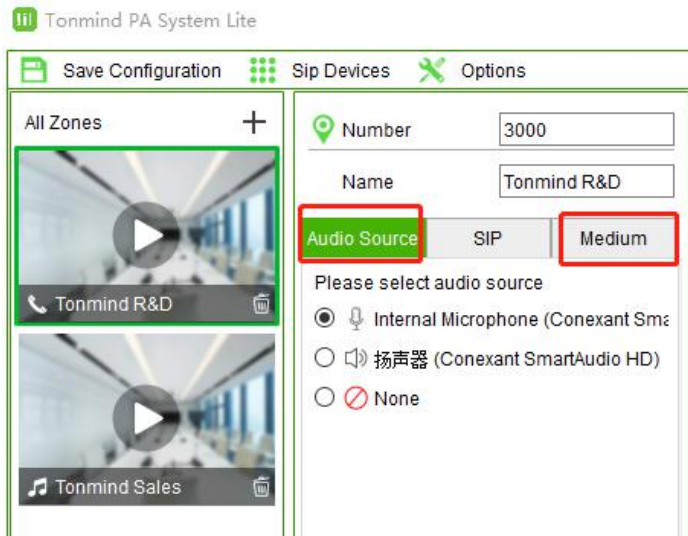
- Number: number can be dialed from an IP phone or other SIP IP audio device to make live announcements to this paging group.
- Name: A name to identify this group.
- Select Devices: Select the member devices of this group.

## Zones Control

After finish creating zones, there are some introduction of each zone controlling and functioning.

### Voice source option

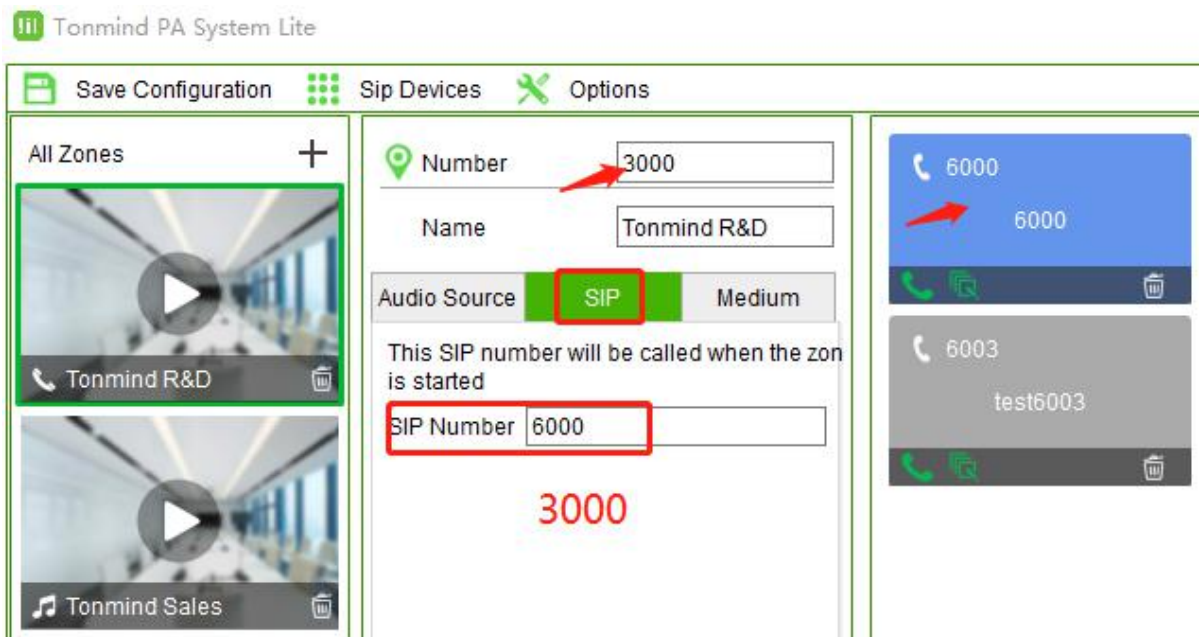
There are two kind of voice source, and Define to be two type: Audio source and Medium.



- Audio Source: two source, one is live microphone in, and the other one is the server could detect the signal from outside radio or music player like spotify and then auto playing
- Medium: Local file and support MP3

**SIP function**

The SIP number could be the zone number or device sip number, for single device or zones device control, and if the device is the IP phone, it is able to call them, vice versa.



**Time &Schedule Set**

Click the Enable Schedule button to start setting as you require, like start time, end time, date range.

Schedule	SIP Trunk	RTP
<input checked="" type="checkbox"/> Enable Schedule		
Start Time	19:19:37	
End Time	19:19:37	
Start Date	2021-12-07	
End Date	2021-12-07	
<input type="checkbox"/> Monday	<input type="checkbox"/> Tuesday	
<input type="checkbox"/> Wednesday	<input type="checkbox"/> Thursday	
<input type="checkbox"/> Friday	<input type="checkbox"/> Saturday	
<input type="checkbox"/> Sunday		

**SIP Trunk Set**

When need to integrate our server Tonmind PA System Lite to other IP-PBX or some other SIP server, need to set SIP trunk as below, the thirty party server IP, port and nubmer and passwork and two others as you need, then it will be connecting to other devices and server.

Schedule	SIP Trunk	RTP
<input checked="" type="checkbox"/> Enable SIP Trunk		
SIP Server	Please input sip server	
SIP Port	Please input sip port	
SIP Number	Please input sip num...	
SIP Password	Please input sip pass...	
Display Name	Please input display n...	
Expire Time	Please input expire time	

**RTP Set**

And if some IP device do not have SIP number, it also support RTP Multicasting to them.

Schedule	SIP Trunk	RTP
<input checked="" type="checkbox"/> Enable RTP Multicast		
RTP Address	eg. 239.255.0.0:5008	

We keep to update and develop the software system and product line to our customer.

Any questions please feel free to contact us, thanks.

Xiamen Tonmind Technology Co.,Ltd

Room 806, Building B, No.55 Wanghai Road, 2nd  
Software Park, Xiamen, Fujian,China,361008.

Tel: +86-0592-5928832

[www.tonmind.com](http://www.tonmind.com)